

MONTHLY MEMBERSHIP PROGRESS REPORT

District 201Q4

Results as of: 1/31/2024

GMT:

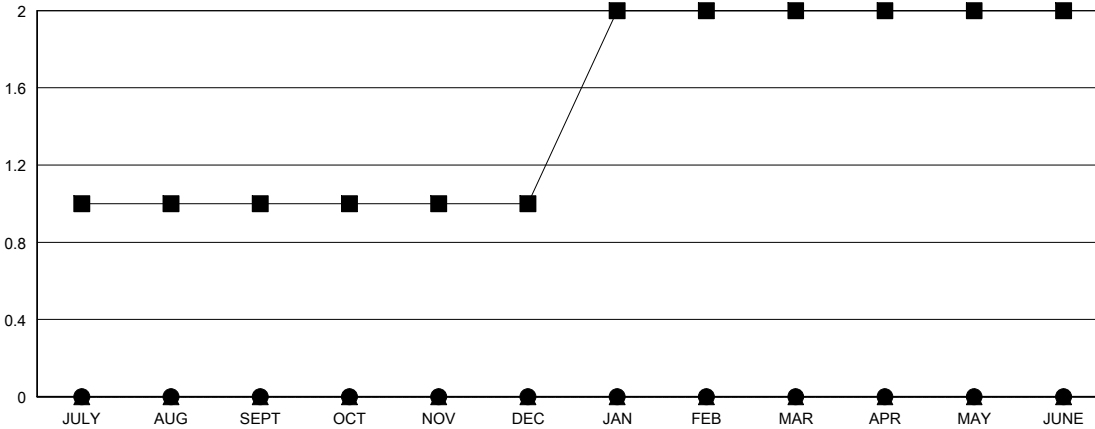
LOCATION AUSTRALIA

GMT CA

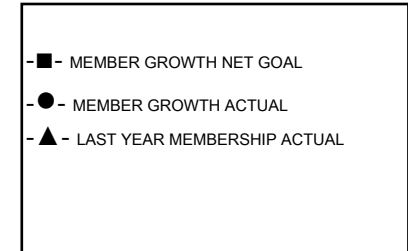
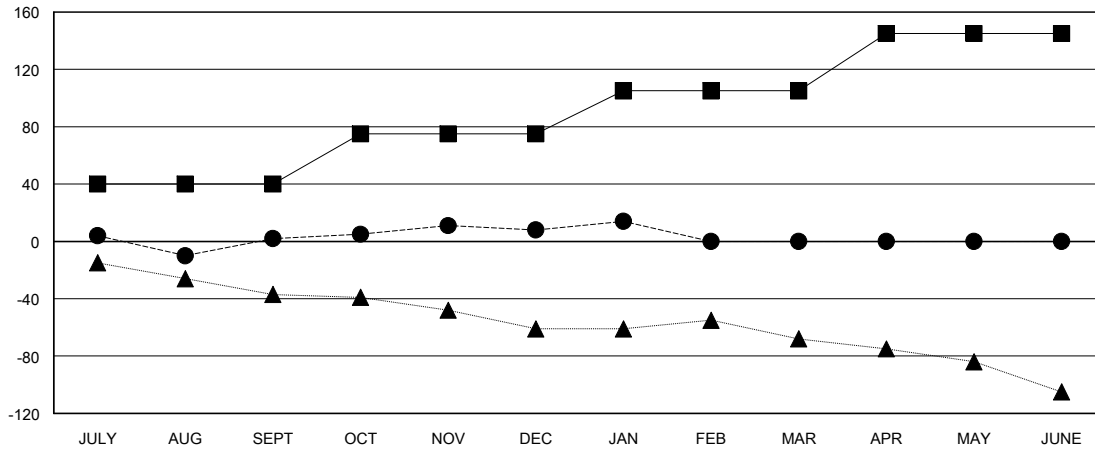
Clubs			
RESULTS FOR 2023-2024			
QUARTER	NEW CLUB GOAL	NEW CLUBS	DROPPED CLUBS
JULY/AUG/SEPT	1	0	1
OCT/NOV/DEC	0	0	0
JAN/FEB/MAR	1	0	0
APR/MAY/JUNE	0	0	0

Members			
RESULTS FOR 2023-2024			
QUARTER	MEMBER GROWTH NET GOAL	MEMBER GROWTH ACTUAL	DROPPED MEMBERS ACTUAL (including transfers)
JULY/AUG/SEPT	40	31	28
OCT/NOV/DEC	35	28	21
JAN/FEB/MAR	30	14	7
APR/MAY/JUNE	40	0	0

GOALS AND ACTUAL NEW CLUBS CUMULATIVE



GOALS AND ACTUAL MEMBERS CUMULATIVE



DROPPED CLUBS: 1	27 CLUBS OF 62 ADDED 1 OR MORE NEW MEMBERS	GENDER DISTRIBUTION MALE 524 (55.04%) FEMALE 428 (44.96%)
DROPPED MEMBERS DECEASED 5 CLUB CANCELLED 0 OTHER 51 TOTAL 56	CLICK HERE FOR CUMULATIVE MEMBERSHIP DATA	TOTAL FAMILY UNIT MEMBERS 226 FAMILY MEMBERS PAYING HALF DUES 114